

Soft Focus Filter Fx John Woods Adobe Certified Expert Photoshop 7.0



Figure 1

Open the Mexican Hat Final.jpg

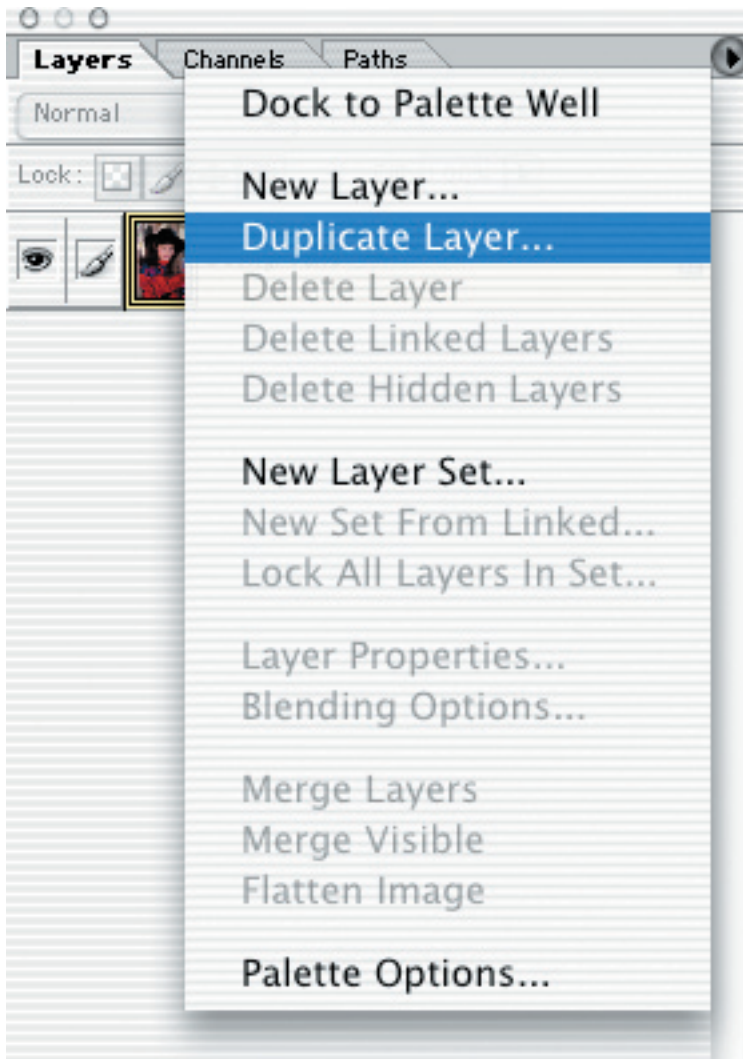


Figure 2

Click on the small arrow at the top right of the Layers Palette, select Duplicate Layer.

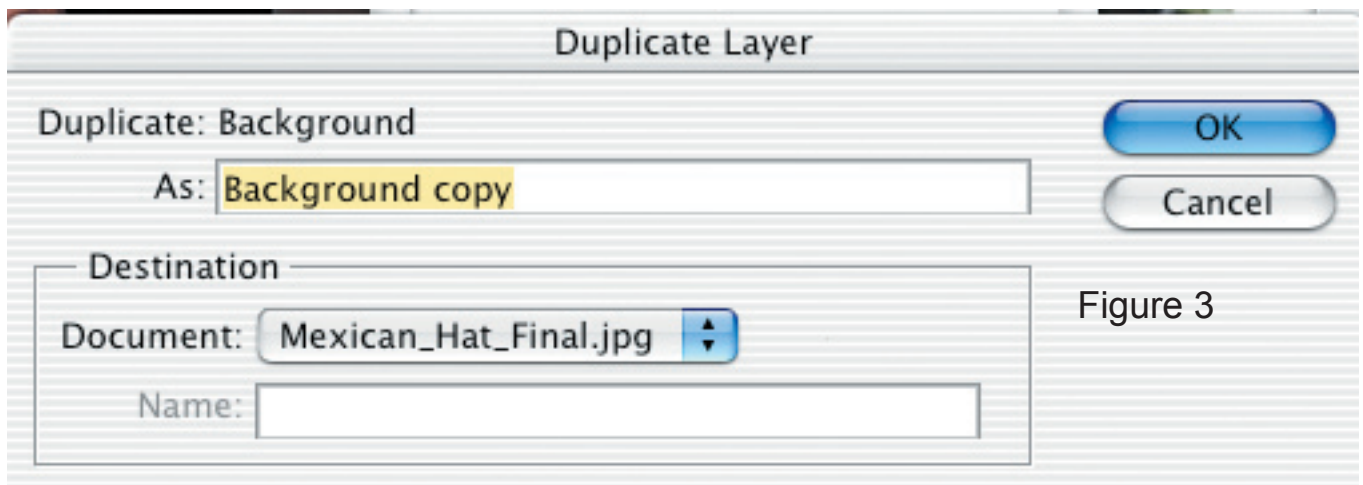


Figure 3

Duplicate Layer dialog box open.

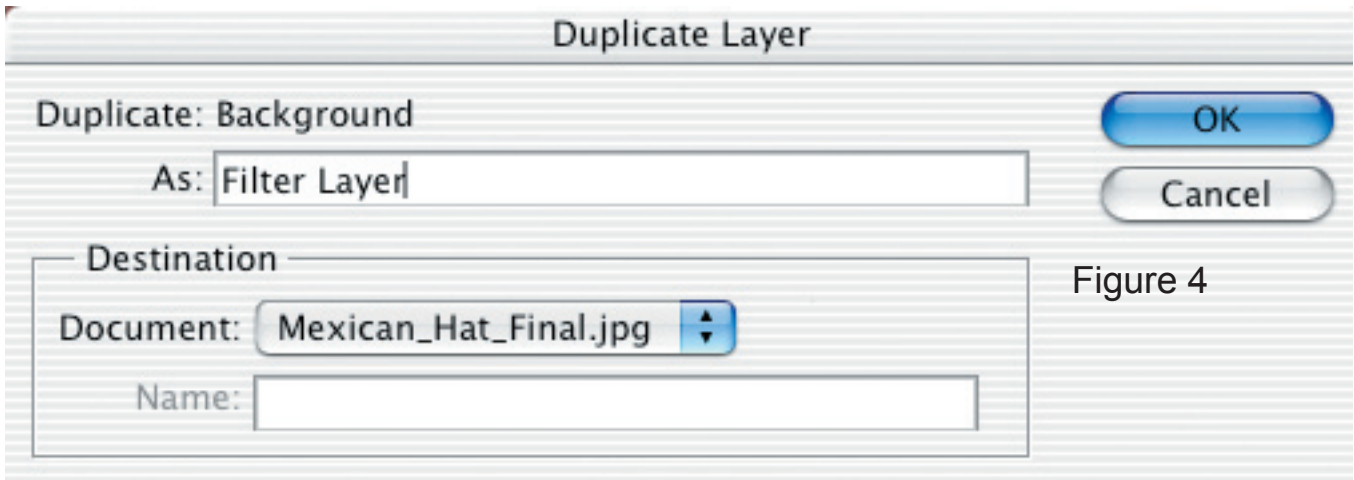


Figure 4

Change the name of the Duplicate Layer to Filter Layer.

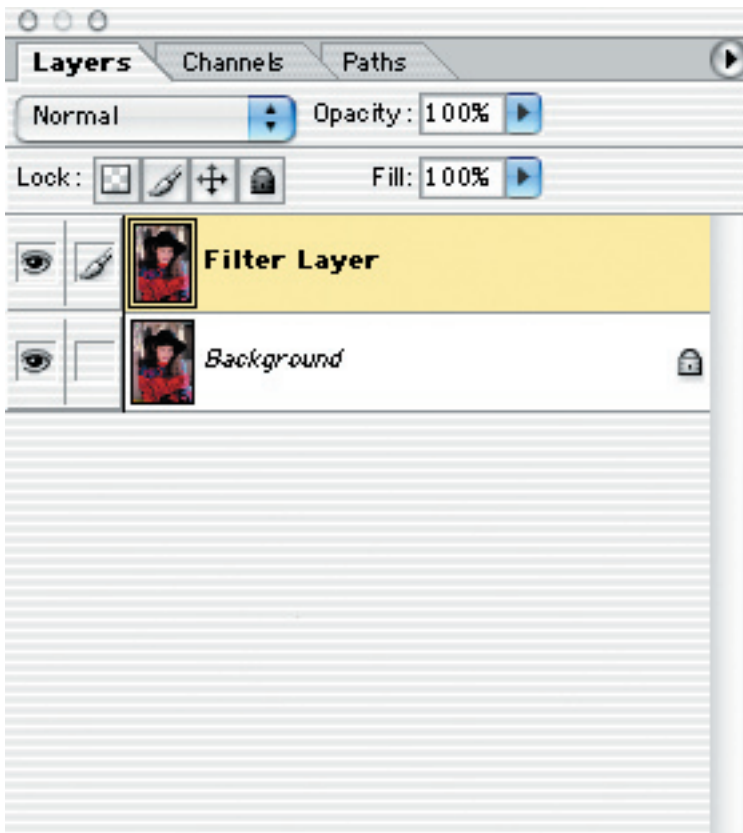


Figure 5

Duplicate Layer (Filter Layer) shown in Layers Palette.
Filter Layer is selected (Yellow Highlight)

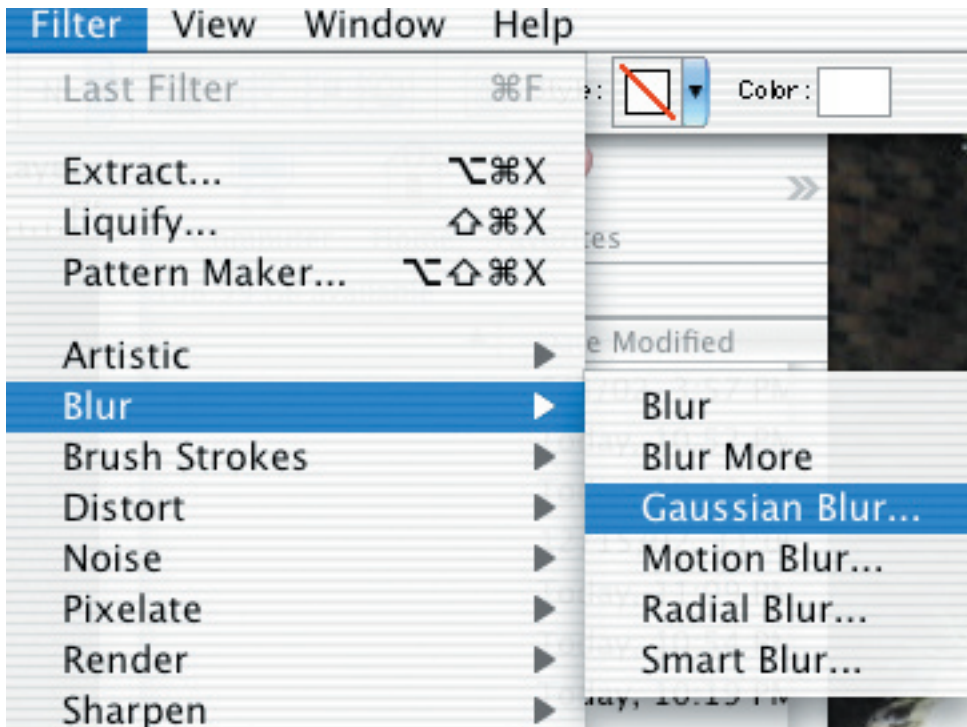


Figure 6

Select Filter>Blur>Gaussian Blur.

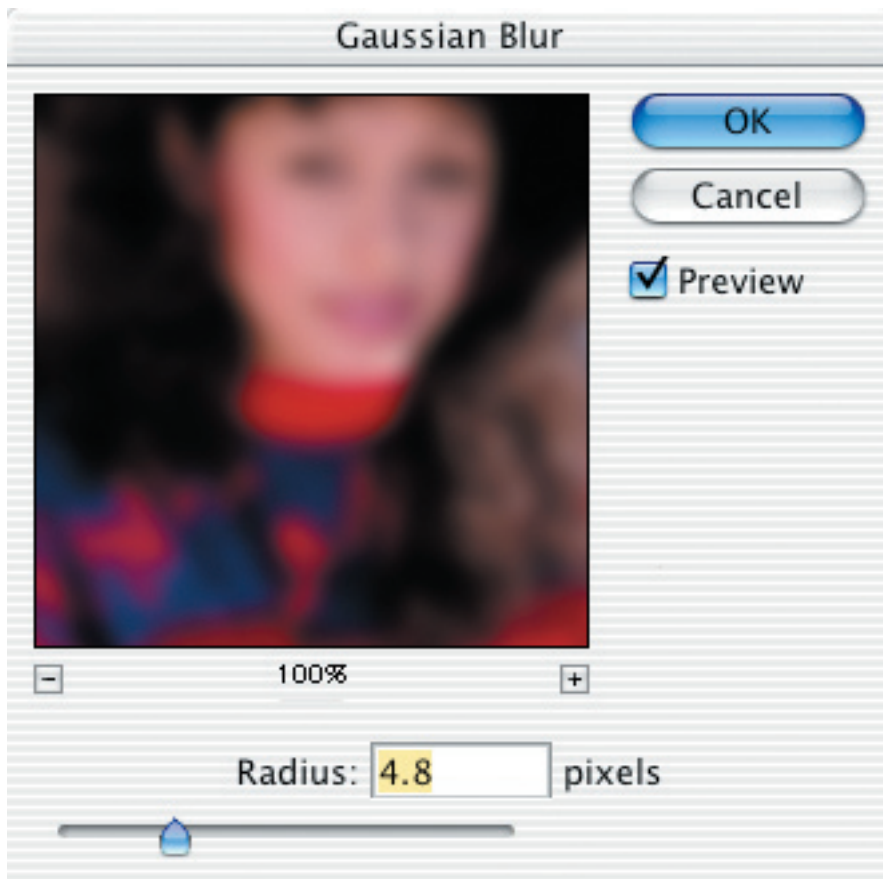


Figure 7

Gaussian Blur control Panel open.



Figure 8

Gaussian Blur effect at 4.8 Radius, on the image.

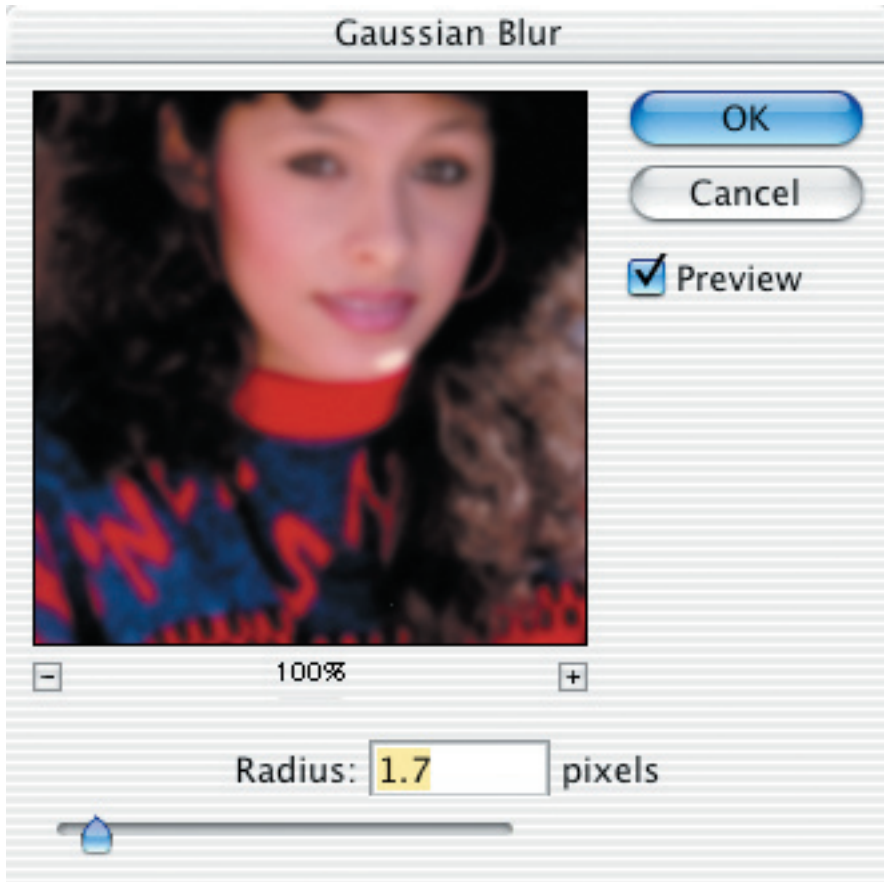


Figure 9

Gaussian Blur control Panel open. Adjust the Radius to 1.7 pixels



Figure 10

Gaussian Blur effect at 1.7 Radius, on the image.

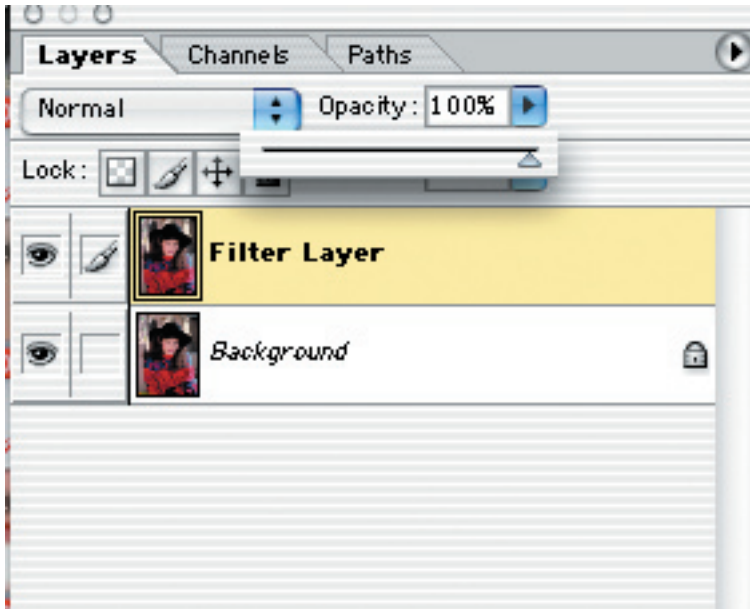


Figure 11

Click on the Opacity Slider on the Filter Layer in the Layers Palette.

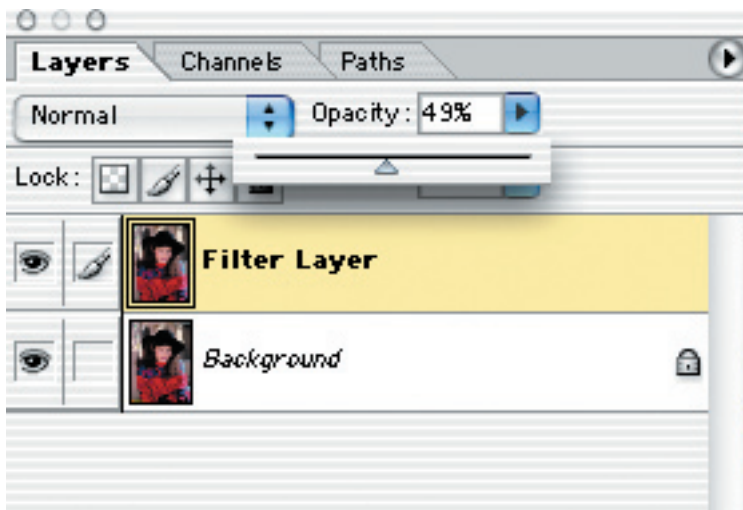


Figure 12

Adjust the Opacity Slider on the Filter Layer to 49%

Figure 12



Figure 13

Results of Adjusting the Opacity Slider on the Filter Layer to 49%. Image is softened down like it was shot through a Soft Focus filter.

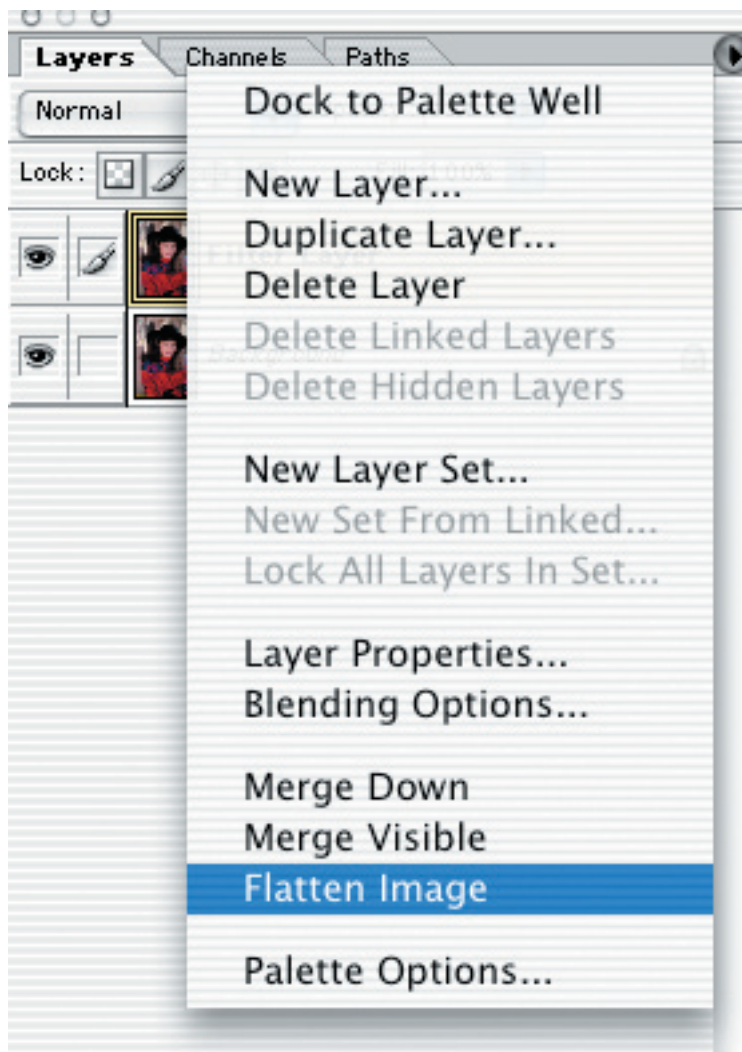


Figure 14

Click on the small arrow at the top right of the Layers Palette, select Flatten Image.